

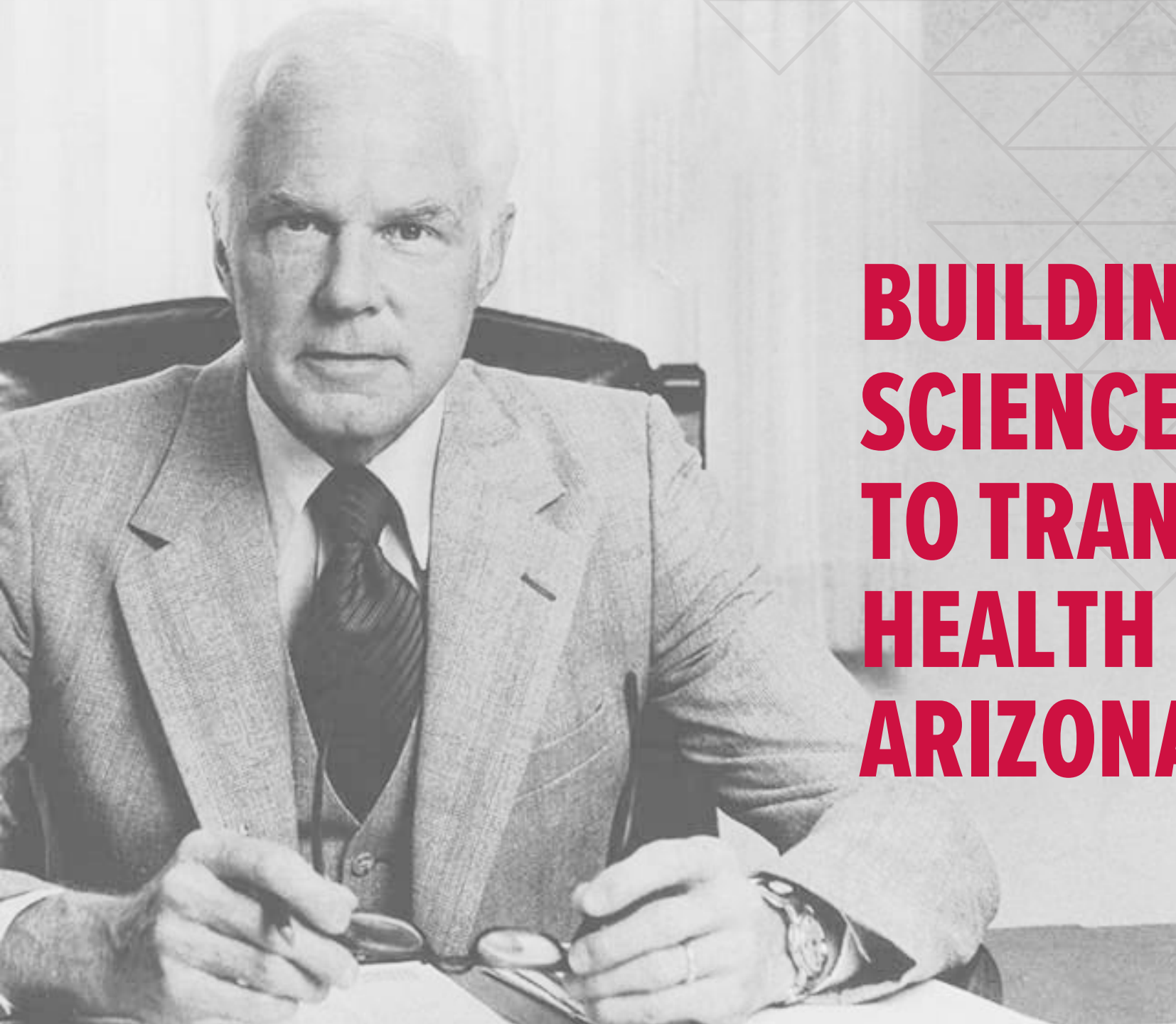
ADVANCING THE FRONTIER:

The Future of Health and Wellness in Arizona and Beyond



Land Acknowledgement

We respectfully acknowledge the University of Arizona is on the land and territories of Indigenous peoples. Today, Arizona is home to 22 federally recognized tribes, with Tucson being home to the O'odham and the Yaqui. Committed to diversity and inclusion, the University strives to build sustainable relationships with sovereign Native Nations and Indigenous communities through education offerings, partnerships and community service.



BUILDING A HEALTH SCIENCE NETWORK TO TRANSFORM THE HEALTH OF ALL ARIZONANS



The MIT Press

Providing the Government and the Consumer
Author(s): John K. ...
Title: ...
In the United States (Winter, 1977), pp. 165-192

Published by: The MIT Press on behalf of American Academy of Arts & Sciences

Should Researchers ...
JSTOR is a not-for-profit service that helps scholars, researchers, and students discover, use, and build upon a wide range of content from a trusted digital archive. We use information technology and tools to increase productivity and facilitate new forms of scholarship. For more information, please contact support@jstor.org.

Your use of the JSTOR archive indicates your acceptance of the Terms & Conditions of Use, available at
<https://about.jstor.org/terms>



JSTOR

American Academy of Arts & Sciences and The MIT Press are collaborating with JSTOR to digitize, preserve and extend access to *Daedalus*

This content downloaded from
64.119.39.94 on Tue, 11 Apr 2023 06:40:24 UTC
All use subject to <https://about.jstor.org/terms>

TOMORROW'S HEALTHCARE STARTS WITH US

Mission to improve
health and human
potential

Renowned health
and science hub in
Tucson

Unique and
unmatched
University
assets



WHAT IF WE COULD

Prevent illnesses before they
happen?

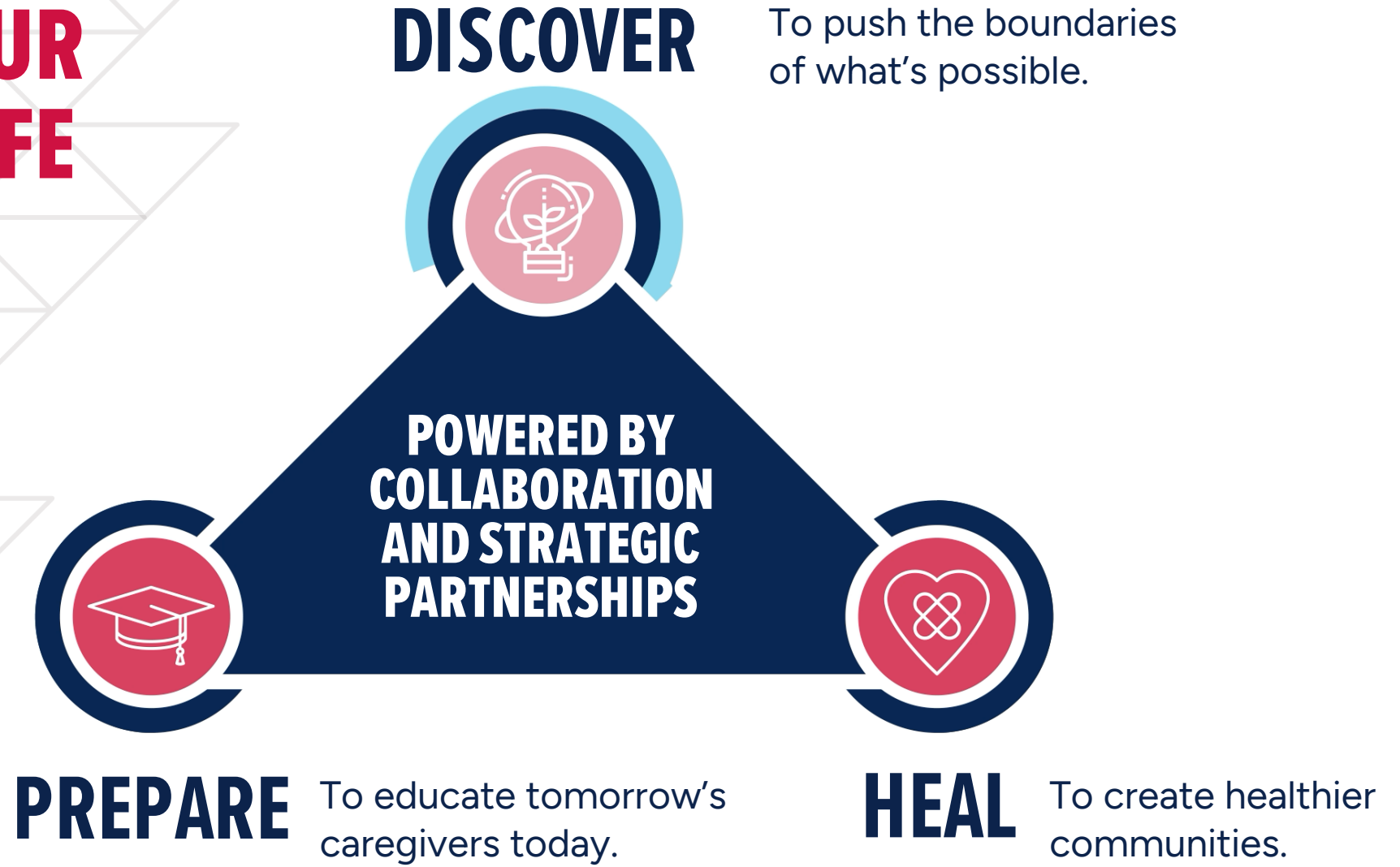


OUR ASPIRATION

ADVANCING THE FRONTIER OF HEALTH AND WELLNESS IN ARIZONA AND BEYOND



BRINGING OUR VISION TO LIFE





WHAT WE ARE DOING TODAY

PREPARE

We are... **educating the next generation of health and wellness care professionals** through an innovative interdisciplinary curriculum using the most advanced health simulation center in the world.



**NEW JTED HEALTH AND
MEDICAL CAREERS HIGH
SCHOOL AT THE BRIDGES**



**ARIZONA SIMULATION
TECHNOLOGY & EDUCATION
CENTER (ASTEC)**







Well Center for Integrative Medicine
ing the pursuit of health and the transformation of



WHAT WE ARE DOING TODAY

HEAL

We are... **making evidence-based medicine mainstream** by meeting people where they are and empowering individuals to make integrative medicine part of everyday health.



The Andrew Weil Center for Integrative Medicine groundbreaking

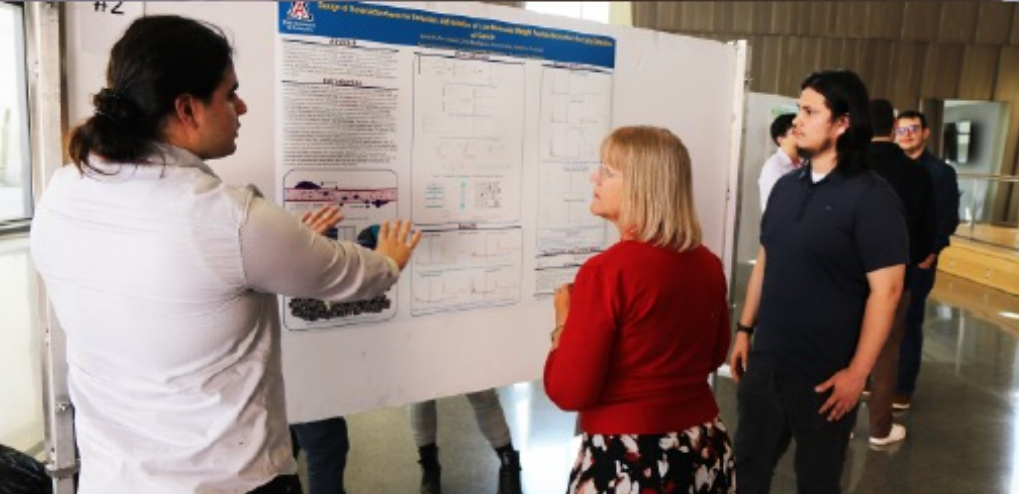


WHAT WE ARE DOING TODAY

HEAL

We are... **bringing lifesaving and life-changing care closer to home** at every phase of life through key clinical areas:

- ▶ Cancer (Arizona's only NCI-Designated Comprehensive Cancer Center)
- ▶ Orthopedic diseases
- ▶ Transplantation services
- ▶ Cardiovascular diseases
- ▶ Gastrointestinal diseases
- ▶ Neurological diseases



Cancer Center





WHAT WE ARE DOING TODAY

HEAL

We are... **creating healthier futures for Arizona's children through clinical, academic, research and philanthropic partnerships.**

- ▶ 77,000 babies born each year across the state
- ▶ Clinical need to train more pediatric residents
- ▶ Life-long chronic illness on the rise in children
- ▶ Lifesaving opportunities by expanding how we treat autoimmune disorders

WHAT WE ARE DOING TODAY

HEAL

We are... **solving the opioid epidemic** by developing non-opioid, non-addictive medications for chronic pain and creating jobs and opportunities to help families and individuals with opioid use disorder.



2020

- Strategic Planning funds fuel the creation of the Comprehensive Pain and Addiction Center.
- Federal grant received to start Addiction Fellowship.

WHAT WE ARE DOING TODAY

HEAL

We are... **solving the opioid epidemic** by developing non-opioid, non-addictive medications for chronic pain and creating jobs and opportunities to help families and individuals with opioid use disorder.



National Institute
of Mental Health



2021

- Center Grant received from NIH/NIDA for University's Center of Excellence in Addiction Studies.
- Federal grants received to start University's Paraprofessional Workforce Training Program to help people with opioid use or substance use disorder.

WHAT WE ARE DOING TODAY

HEAL

We are... **solving the opioid epidemic** by developing non-opioid, non-addictive medications for chronic pain and creating jobs and opportunities to help families and individuals with opioid use disorder.



▼

2021/2022

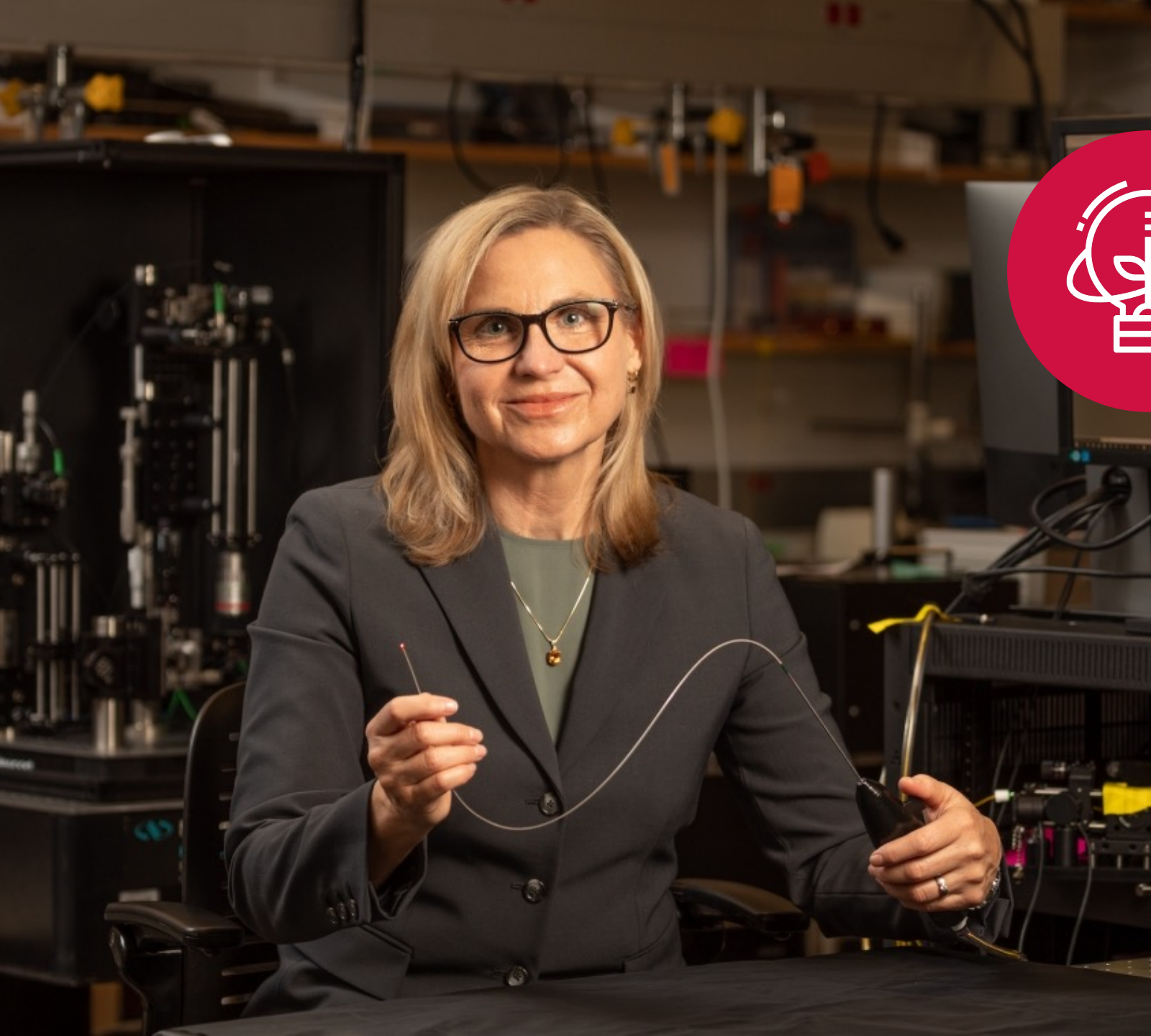
Innovative partnership started between University of Arizona and Oklahoma State University to develop novel addiction treatments and non-opioid, non-addictive medications for pain.

WHAT WE ARE DOING TODAY

DISCOVER

We are... **bringing
breakthrough research
to the bedside** through
innovative discoveries and
groundbreaking medical
technologies.







**HOW DO WE HARNESS THE POWER OF
TODAY'S ACHIEVEMENTS TO REACH
TOMORROW'S ASPIRATIONS?**

WHAT WE WILL DO TOMORROW

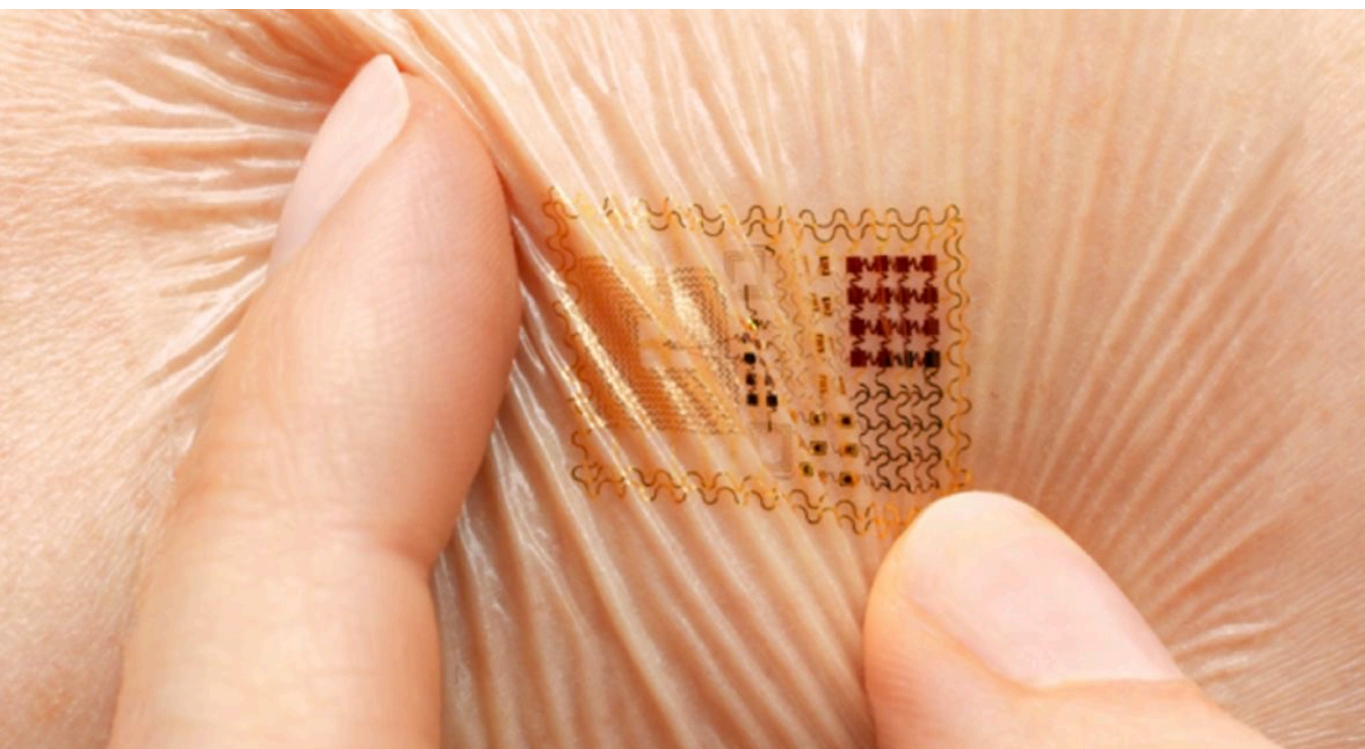
DISCOVER



We will... **improve digital connectivity for all Arizonans** by enhancing access to care and placing their health and wellness at their fingertips.

THE DIGITIZATION OF ARIZONA

- New technologies to manage and improve chronic diseases
- Health Information Exchange to improve access, ease and quality of care
- Seamless inpatient experience via smartphones with digital admission and check-in to hospitals and clinics



WHAT WE WILL DO TOMORROW

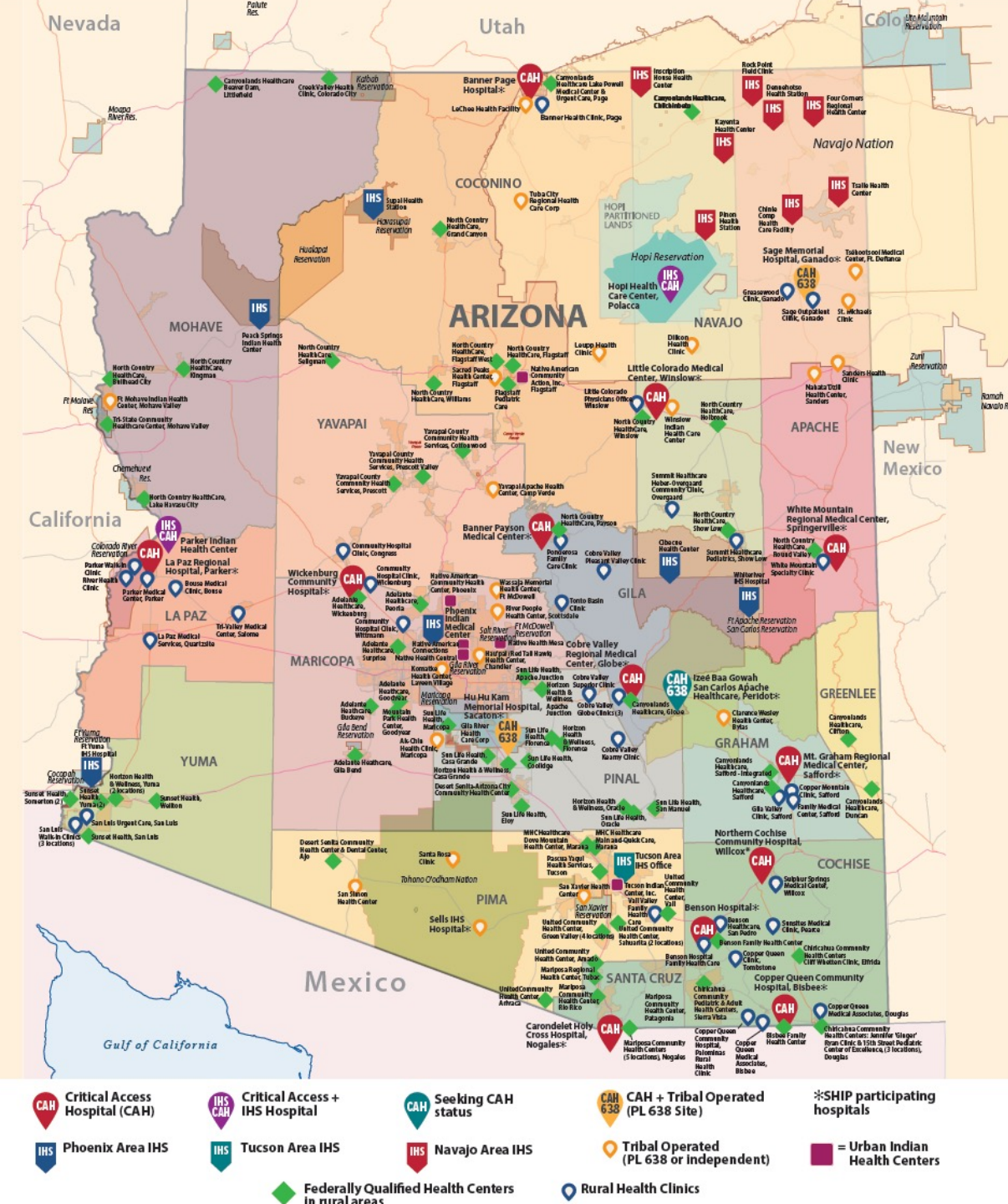
PREPARE HEAL DISCOVER



We will... **improve the health and wellness of humanity one patient, one community and one county at a time.**

RURAL PUBLIC HEALTH NETWORK

- Provides education, technical assistance, data and analysis to rural hospitals and providers to help them adapt to a rapidly changing rural health environment that addresses rural health needs
- Trains, recruits and retains health professionals for rural practice
- Collects, synthesizes and disseminates data to inform providers, policymakers and consumers on legislation, regulation and grant opportunities to improve rural health

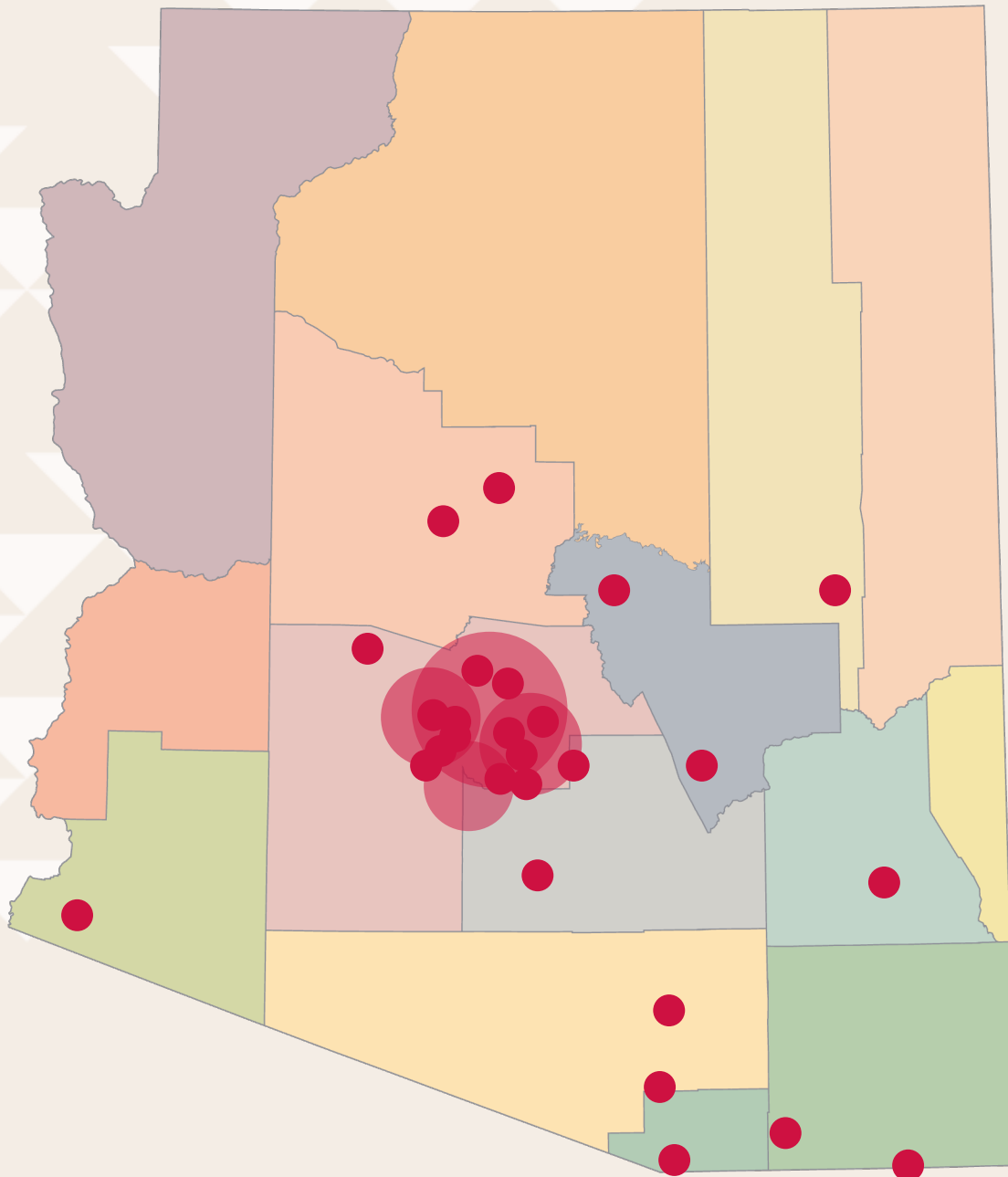


ACTIVATE OUR RURAL HEALTH NETWORK

Arizona Rural Health Safety Net includes:

- 16 Critical Access Hospitals (CAHs)
- 39 Rural Health Clinics (RHCs)
- 23 Health Centers in 175 Sites (FQHCs)
- 16 IHS Hospitals & Clinics
- 31 Native Nations-operated Hospitals & Clinics

By joining this network with new digital technologies, we can reach every person in the state.



CLINICAL PARTNER NETWORK

We have affiliations with clinical partners across the state in nearly every county, allowing our faculty physicians, medical residents and fellows, as well as faculty nurses, nursing students and residents to provide care and receive training across **more than 30 locations.**



We will...**prevent future pandemics** by understanding how the environment impacts animal and human health.

ONE HEALTH

- Converges of human and animal health and environmental sciences
- Unites physicians, veterinarians, research scientists and other disciplines to enhance global biodiversity, sustainability and public health
- Leverages strengths of our Cooperative Extension Services, College of Veterinary Medicine, Health Sciences and Mental Health Services to serve the needs of all Arizonans

WHAT WE WILL DO TOMORROW

**PREPARE
HEAL
DISCOVER**



WHAT WE WILL DO TOMORROW

DISCOVER



We will... **create a beacon for health, healing and science** where people from all over the world want to learn, train and discover together.

MULTI-INSTITUTIONAL TRANSLATIONAL RESEARCH PARK

- Large-scale collaborative Translational Life Sciences research focused on drug and vaccine development, medical device development, innovative digital health and biotechnology
- Global-leading core facility surrounded by health, wellness, biotech, pharmaceutical, digital and medical device companies from startups to multinational conglomerates

WHAT WE WILL DO TOMORROW

DISCOVER



We will... **convert cancer to a chronic disease** by establishing Arizona as the global leader in human immunome research and discovery.

Through The Center for Advanced Molecular and Immunological Therapies (CAMI), we will:

- Be a national biomedical research hub in Phoenix
- Unravel the complexities of the immunology of cancers, infectious diseases and autoimmune conditions
- Develop novel strategies for the diagnosis, treatment and prevention of diseases

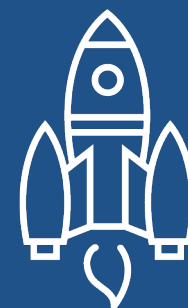
WHAT WE WILL DO TOMORROW

DISCOVER



We will... **serve as pioneers for space health**, caring for the brave individuals who explore our universe.

- Improve health and wellness for NASA missions
- Provide pre-flight evaluation, preventive strategies and in-flight disease treatment
- Use Biosphere 2 as the home base for simulations and space health endeavors





Together, we will...
improve digital
connectivity for all
Arizonans.

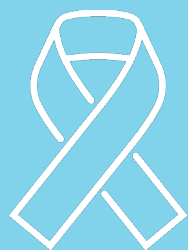


Together, we will...

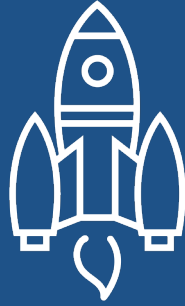
improve the health
and wellness of
humanity one patient,
one community, one
county at a time.



Together, we will...
create a beacon for
health, healing and
science.



Together, we will...
convert cancer to a
chronic disease.



Together, we will...
serve as pioneers for
space health.

An aerial photograph of a university campus at sunset. In the background, a range of rugged mountains is silhouetted against a warm, orange-hued sky. The campus features several large, modern buildings, including a prominent white building with a large dome and a tall, thin tower. A road with cars and a few pedestrians is visible in the foreground, surrounded by green trees and landscaping. The overall scene conveys a sense of academic excellence and innovation in a scenic setting.

Together, we will...

**ADVANCE THE FRONTIER OF HEALTH AND
WELLNESS IN ARIZONA AND BEYOND
BY BUILDING THE MOST INNOVATIVE
STATEWIDE ACADEMIC HEALTHCARE
SYSTEM IN THE COUNTRY.**

